

# TR-250M

## CRANE SPECIFICATIONS

### CRANE CAPACITY

9.0m Boom	25,000kg	at 3.5m	( 8 part-line)
15.5m Boom	19,400kg	at 4.0m	( 6 part-line)
22.0m Boom	12,500kg	at 5.0m	( 4 part-line)
28.5m Boom	8,000kg	at 6.5m	( 4 part-line)
7.2m Jib	3,000kg	at 70°	( 1 part-line)
12.8m Jib	2,000kg	at 74.5°	( 1 part-line)
Single top	3,000kg		( 1 part-line)

### MAX. LIFTING HEIGHT

Boom	29.5m
Jib	41.7m

### MAX. WORKING RADIUS

Boom	26.0m
Jib	36.5m

### BOOM LENGTH

9.0m - 28.5m

### BOOM EXTENSION

19.5m

### BOOM EXTENSION SPEED

19.5m / 82s

### JIB LENGTH

7.2m, 12.8m

### MAIN WINCH SINGLE LINE SPEED

High range: 125m/min (4th layer)  
Low range: 62m/min (4th layer)

### MAIN WINCH HOOK SPEED

High range: 15.6m/min (8 part-line)  
Low range: 7.7m/min (8 part-line)

### AUXILIARY WINCH SINGLE LINE SPEED

High range: 125m/min (4th layer)  
Low range: 62m/min (4th layer)

### AUXILIARY WINCH HOOK SPEED

High range: 125m/min (1 part-line)  
Low range: 62m/min (1 part-line)

### BOOM ELEVATION ANGLE

0° - 83°

### BOOM ELEVATION SPEED

0° - 83° / 43s

### SWING ANGLE

360° continue

### SWING SPEED

3.0rpm

### WIRE ROPE

Main Winch

16mm × 170m (Diameter × Length)  
7 × 7 + 6 × Fi(29) Class B ordinary · Z twist  
Spin-resistant wire rope  
Breaking strength 17.6t

Auxiliary Winch

16mm × 95m (Diameter × Length)  
7 × 7 + 6 × Fi(29) Class B ordinary · Z twist  
Spin-resistant wire rope  
Breaking strength 17.6t

### BOOM

4-section hydraulically telescoping boom of box construction.  
(stage 2: sequential; stages 3,4: synchronized)

### BOOM EXTENSION

2 double-acting hydraulic cylinder  
1 wire rope type telescoping device

### JIB

2-staged swingaround boom extension which stores alongside boom base section.  
(with 2nd stage being a pull-out type)  
Triple offset (5°, 25°, 45°) type

### SINGLE TOP

Single sheave. Mounted to main boom head for single line work.

### HOIST

Driven by hydraulic motor and via spur gear speed reducer.  
With free-fall device.  
Automatic brake (with foot brake for free-fall device)  
2 single winches

### BOOM ELEVATION

1 double-acting hydraulic cylinders

### SWING

Hydraulic motor driven planetary gear reducer  
Swing bearing  
Swing free/lock changeover type  
Hand brake

### OUTRIGGERS

Fully hydraulic X-type (floats mounted integrally)  
Slides and jacks each provided with independent operation device.

Full extended width 6.3m  
Middle extended width 5.0m  
Minimum extended width 3.6m

### MAX. OUTRIGGER LOAD

25.1t

### HYDRAULIC PUMPS

2 variable piston pumps  
2 gear pumps

### HYDRAULIC OIL TANK CAPACITY

407 liters

### SAFETY DEVICES

Automatic moment limiter (AML)  
Over-winding cutout  
Working area control device  
Winch drum lock  
Level gauge  
Hook safety latch  
Hydraulic safety valve  
Telescopic counterbalance valve  
Elevation counterbalance valve  
Jack pilot check valve  
Swing lock

### EQUIPMENTS

Cab heater (with front and side defrosters)  
Hydraulic oil temperature indication lamp  
Radio  
Fan  
Oil cooler  
Winch drum rotation indicator  
Operation pedals for elevating/telescoping  
Jib extending device

# TOTAL RATED LOADS

(1) With outriggers set (360°)

(i)

Unit : ton

Outriggers fully extended													
B (m)	A	9.0m	15.5m	22.0m	28.5m	C		7.2m			12.8m		
						D	E (°)	5°	25°	45°	5°	25°	45°
2.5		25.0	19.4	12.5			83	3.0	2.1	1.6	2.0	1.2	0.8
3.0		25.0	19.4	12.5			74.5	3.0	2.1	1.6	2.0	1.2	0.8
3.5		25.0	19.4	12.5	8.0		70	3.0	2.1	1.6	1.7	1.1	0.8
4.0		23.0	19.4	12.5	8.0		68	2.8	2.1	1.6	1.6	1.05	0.8
4.5		21.2	18.0	12.5	8.0		65	2.5	1.9	1.6	1.45	1.0	0.8
5.0		19.4	16.7	12.5	8.0		60	2.1	1.65	1.4	1.25	0.95	0.75
5.5		17.8	15.5	11.7	8.0		55	1.85	1.5	1.25	1.1	0.9	0.7
6.0		16.3	14.4	11.0	8.0		50	1.45	1.3	1.15	1.0	0.85	0.65
6.5		15.1	13.4	10.4	8.0		45	1.15	1.05	1.0	0.93	0.8	0.6
7.0			12.5	9.8	7.6		40	0.9	0.85		0.7	0.65	
8.0			10.7	8.7	6.9		35	0.7	0.65		0.55	0.5	
9.0			8.45	7.7	6.2		30	0.55	0.5		0.43	0.41	
10.0			6.95	6.8	5.65		25	0.43	0.42				
11.0			5.75	6.1	5.15								
12.0			4.85	5.4	4.7								
13.0			4.1	4.65	4.3								
14.0				4.0	4.0								
15.0				3.5	3.7								
16.0				3.1	3.4								
17.0				2.75	3.0								
18.0				2.45	2.7								
19.0				2.15	2.4								
20.0					2.15								
22.0					1.75								
24.0					1.4								
26.0					1.15								

A = Boom length

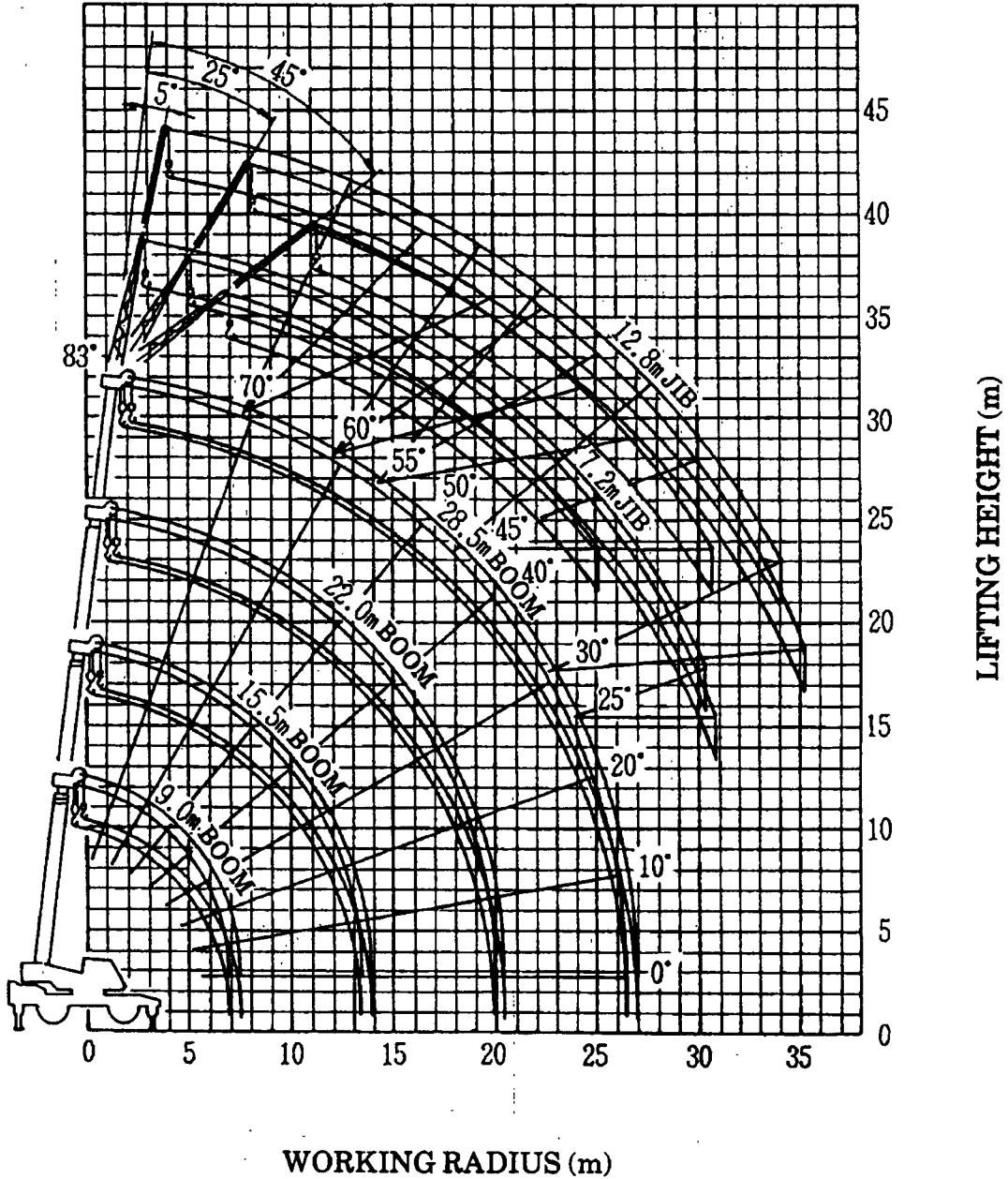
B = Working radius

C = Jib length

D = Jib offset

E = Boom angle

# WORKING RADIUS - LIFTING HEIGHT



### NOTES:

1. The deflection of the boom is not incorporated in the figure above.
2. The figure above is for the case when the outriggers are fully extended (360°).

# DIMENSIONS (1/100)

